



## A Fast, and Affordable Scanner



### Features:

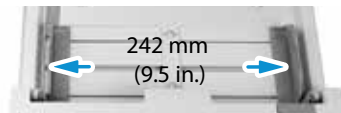
- Fast, 40ppm /80ipm scanning in color, grayscale and monochrome (200 dpi)
- Fast, 40ppm / 80ipm scanning in grayscale and monochrome (300 dpi )
- Max. document width up to 9.5 in. (242 mm)
- Daily duty cycle up to 6,000 sheets
- Robust 80-page automatic document feeder
- Hard and embossed card scanning up to 1.25 mm in thickness in portrait or landscape feeding
- Press and scan to cloud servers via the bundled software Button Manager V2
- Earth-friendly LED technology
- Long page scanning up to 3000 mm (118")
- Auto power off setting

### Overview

The AD230 is a 40 page-per-minute (200 dpi), duplex scanner that is fast, reliable, and affordable for business where scanning plastic ID cards, business cards, documents or other heavy card stock is necessary. Combining paper protection and reverse roller technologies, the AD230 balances fast speed with exceptional feeding reliability across a wide variety of scanning situations.

### Max. document width up to 9.5 in. (242 mm)

The AD230 boasts a unique and innovative design in comparison with its predecessors - the ability to accommodate form document width up to 242 (9.5 in.).



### A Duplex Scanner Suited for Document and Cards

Thanks to the advanced straight paper path and image processing technology, mixed batches of documents with varies sizes and weights can be scanned, appropriately cropped, deskewed, and ready to use. Scan size accepts paper from receipts 50 x 50 mm (2 x 2 in.) to form paper 242 x 356 mm (9.5 x 14 in.). The auto document feeder is also robust enough to feed paper up to 400 g/m<sup>2</sup> (110 lb.) and embossed hard cards such as ID cards, credit cards, driver's license, and health insurance card up to 1.25 mm in thickness.

### A Clear LCD Display

The AD230 is easy to use through the enhanced LCD display . By selecting your destination and pressing the "Scan" button, the scan can be done and the scanned image can be sent to your specified destination application such as e-mail,

printer, or your favorable image-editing software application.

### Reverse Roller Enhances Feeding Reliability

Designed with the innovative reverse roller for advanced paper separation capability, the AD230 delivers outstanding feeding reliability and operating productivity by effectively reducing the risk of a multi-feed or paper jam.



### Ultrasonic Multi-Feed Detection

With the ultrasonic multi-feed detection capability, the scanner allows you to set overlapped paper by detecting paper thickness between documents. The ultrasonic function can be turned off when scanning document with labels, sticky notes, or taped receipts. This innovative design prevents double feeding and effectively scans documents of different weights or thickness.

### Compact Design to Save Your Space

The AD230 features a unique and stylish design as both the input and output paper tray can be folded when not in use. The paper tray also helps to protect the unit from dust. Unlike bulky conventional scanners, the slim AD230 can be easily carried and fit on a desk without taking up a lot of space.

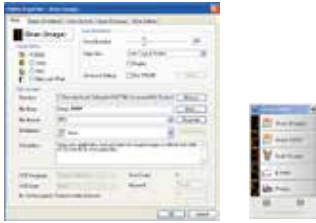
### Powerful Bundled Software Applications

The AD230 come with TWAIN and ISIS drivers, and are bundled with a suite of powerful software applications that include Avison Button Manager, AVScan X, and Nuance PaperPort SE 14.

# Avison | AD230 Sheetfed Scanner

## Avison's Button Manager V2

-Completes your scan with a single step



The Button Manager V2 main screen

Button Manager V2 makes it easy for you to scan and send your image to your favorite destinations with a press one button. Now the new version comes with an innovative feature to let you scan and automatically upload the scanned document to popular cloud repositories such as Google Docs, Microsoft SharePoint, or FTP. In addition, the iScan feature allows you to insert the scanned image or recognized text after optional OCR (Optical Character Recognition) process to your text editor such as Microsoft Word to get your job done easily and quickly.

## AVScan X

-The Intelligent Document Management Tool



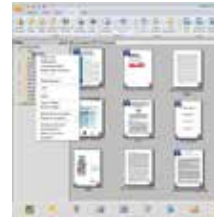
The AVScan X main screen

Document Imaging is the very first step of Document Management. However, poor quality images can cause serious problems to later indexing or storing processes. It may increase scanning labor costs and lowers the OCR accuracy. AVScan X ensures all documents are checked and polished at the time they are scanned such that the image quality is guaranteed before they are ready to use for other purposes.

AVScan X is an intelligent scanning and electronic filing solution. AVScan X possesses distinct features that convert and index scanned information into electronic documents for easy storage and fast retrieval.

## PaperPort SE14

- The Professional Choice to Organize and Share Your Documents



The PaperPort SE14 main screen

PaperPort SE 14 is Nuance's most popular scanning and document management solution, carefully designed specifically for home office use. Part traditional file cabinet, part digital-document desktop, PaperPort SE 14 is the fastest and easiest way to scan, share, search and organize your documents. Additionally, PaperPort SE 14 now delivers anytime-anywhere access to your most important files however it's convenient for you - using a PC, Mac, iPhone, iPad, or Android device.



(optional)

## Avison AD230 Product Specifications

Paper Feeding:	ADF 80-page capacity
Scanning Technology:	Contact Image Sensor ( CIS )
ID card thickness:	Up to 1.25 mm
Scanning Size:	Max. 216 x 356 mm ( 8.5 in x 14 in.) (Paper width up to 242 mm (9.5")) Min. 50 x 50 mm ( 1.9 in x 1.9 in.)
Scanning Speed:	40 PPM / 80 IPM (BW/Grayscale, A4, 300 dpi) 40 PPM / 80 IPM (Color, A4, 200 dpi) 30 PPM / 60 IPM (Color, A4, 300 dpi)
Paper Thickness:	27~413 g/m <sup>2</sup> (7~110 lb.)
Optical Resolution:	600 dpi
Output Resolution:	75, 100, 150, 200, 300, 400 and 600 dpi
Output Formats:	B/W, greyscale, 24-bit color
File Formats:	BMP, PNG, GIF, JPEG, PDF, Searchable PDF Multi-Page TIFF, TIFF, RTF, TXT, XPS, DOC, XLS, PPT, DOCX, XLSX, PPTX, HTML.
Bundled Software:	Avison Button Manager V2, Avison AVScan X, PaperPort SE 14
Interface/Drivers	USB 2.0 (USB 3.0 Compatible) / TWAIN , ISIS
Power Supply:	Input: 100-240 VAC, 50/60 Hz Output: 24V, 2.0A
Power Consumption:	Operating: <17 W Ready: <5.5W Sleep: <2.6W Off: <0.33W
Environmental Factors:	Operating temperature: 10°C to 35°C (50°F to 95°F) Operating humidity: 10% to 85%
Acoustical Noise:	Operating: <50 dB Standby: <45 dB
Dimensions	Max.: 316 x 680 x 239 mm ( 12.4 x 26.8 x 9.4 in.)
(W x D x H):	Min.: 316 x 191 x 168 mm ( 12.4 x 7.5 x 6.6 in.)
Weight:	3.9 kg ( 8.5 lb.)
Recommended Daily	6,000 sheets
Scanning Volume:	
Multi-feed Dection:	Ultrasonic Sensor

We have endeavored to ensure that the information in this manual is accurate and that Avison is not responsible for printing or typographical errors. The above configuration is for reference only. The actual configuration (software, hardware) should be completed with the specification described in the purchase agreement. Avison Inc. owns the intellectual property rights of the product outlook and design and the product outlook and design are subject to change. Avison reserves the right to the interpretation of the product description. Avison, Inc. All rights reserved. Other company and product names mentioned in this document are trademarks of their respective companies. Wheren the third party product is for reference only and Avison does not warrant these products nor is responsible for the efficiency or use of these products.

## System Requirements

CPU:	Intel Core i3 (2.1GHz) or Higher
Memory:	1GB (32bit Windows) 2GB (64bit Windows)
DVD-ROM:	DVD ROM Drive
USB:	USB2.0 Port (USB 3.0 Compatible)
Windows Operating System:	Windows 10 , 8 , 7, Vista. SP3, XP (32 & 64 bit)

## Contents

AD230 Scanner
Power Supply
Quick Guide
USB 2.0 Cable
CD-ROM includes:
-Scanner Driver (TWAIN/ISIS Driver)
-Avison Button Manager V2
-Avison AVScan X
-Nuance PaperPort SE 14



**Avison**  
www.avision.com